

WI2016/013 FMG-Kariyarra Land Access ILUA

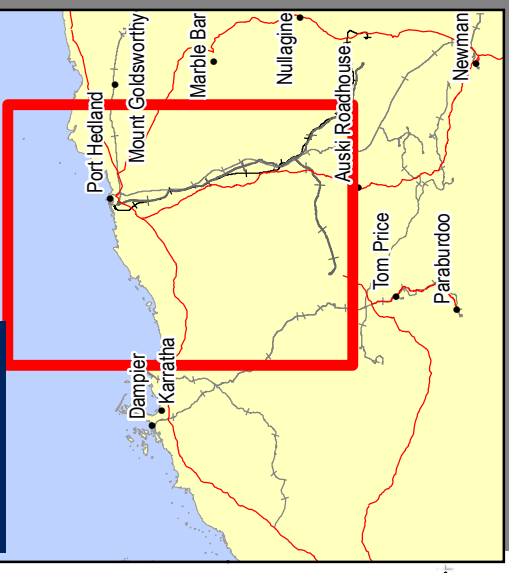
Appendix 6 Map of the Agreement Area showing geographic coordinates

Page 1 of 2

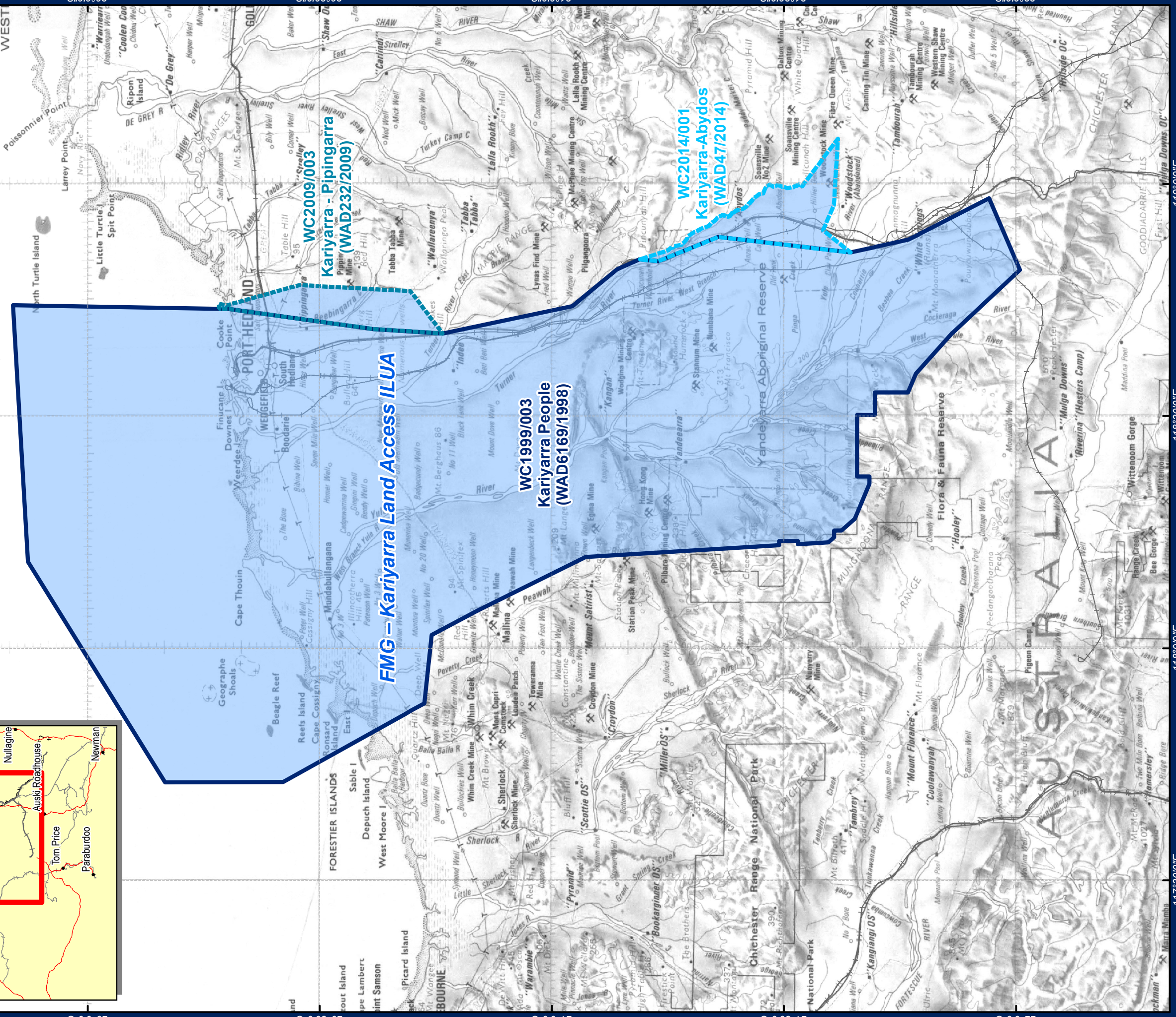
**APPENDIX 6**

**Map of the agreement area showing  
geographic coordinates**

LOCATION MAP



W12016/013 FMG-Kariyarra Land Access ILUA  
 Appendix 6 Map of the Agreement Area showing geographic coordinates  
 Page 2 of 2



119°00"E

118°300"E

118°00"E

117°300"E

WEST

North Turtle Island

PORT HEDLAND

FORESTIER ISLANDS

117°300"E

20°00"S

20°00"S

21°00"S

21°00"S

21°300"S

21°300"S

22°00"S

22°00"S

119°00"E

118°300"E

118°00"E

117°300"E

LEGEND

- FMG - Kariyarra Land Access ILUA AREA**
- FMG - Kariyarra Land Access ILUA AREA
- WC2014/01 Kariyarra-Abydos (WAD47/2014)
- WC2009/03 Kariyarra - Pipingarra (WAD232/2009)
- WC-1999/03 Kariyarra People (WAD6169/1998)

Map Sources:  
 ILUA boundary compiled from NTDA Register sourced from NNTT (01/12/2016)  
 NT claims as per NTDA Register sourced from NNTT (01/12/2016). Topo data sourced from GA (2016)

Requested By: K.Green  
 Drawn By: PM  
 Revised By: pmastair  
 Approved By:  
 Scale: 1:900,000  
 Coordinate System: GCS GDA 1994  
 Document Name: 045\_MP\_HE\_0255

Date: 2/12/2016  
 Size: A3P  
 Revision: 0  
 Confidentiality: 1

**Fortescue Metals Group**  
 FMG - Kariyarra Land Access ILUA



**Fortescue Metals Group Ltd**  
 The New Force in Iron Ore

